

December 13, 2005

Developmental Disabilities Resources List

Resources and Contact Information

Community Connections Booklet - An Information Booklet On Support Services For Individuals Of All Ages With Special Needs

<http://www.wcdsb.edu.on.ca/ss/spec-ed/publications-cc.html>

Community Information Centre of Waterloo Region

<http://www.waterlooregion.org/cic/>

Information Cambridge

<http://www.cvbinfocam.on.ca/>

Ontario Early Years Centres

<http://www.ontarioearlyyears.ca/oeyc/en/home.htm>

Social Planning Council of Kitchener- Waterloo Basic Needs Guide

<http://www.waterlooregion.org/basic/>

Summer Camps & Recreation Programs

http://www.city.kitchener.on.ca/pdf/summer_camp_catalogue.pdf

Ministry of Community and Social Services / Ministry of Children and Youth Services

Program Supervisor

Central West Region

Phone: 1-877-832-2818 X 217

For Access to Residential, Respite, and Day Programs, contact the Developmental Services Access Centre at (519) 741-1121.

Residential Programs include Group Living, Supported Independent Living, and Familyhome programs.

Residential Providers include:

- Aldaview Services (662-3297)
- Christian Horizons (650-3241)
- Community Living Cambridge (623-7490)
- Elmira and District Association for Community Living (669-3205)
- Extend-a-Family Association (741-0190)
- K-W Habilitation Services (744-6307)
- Parents for Community Living (742-5849)
- Sunbeam Residential Development Centre (893-6200)

Vocational and Day Program Providers include:

- Aldaview Services: Life Skills Programs, Vocational Supports, Employment Supports, Achieve/Transitional Programs (662-3297)
- Community Living Cambridge: Adult Developmental Program, ARC Industries, Supported Employment Services, Community Options/transitional programs (623-7490)
- Elmira and District Association for Community Living: Life Skills Program, ARC Industries, Employment Services (669-3205)
- Extend-a-Family Association: W.A.L.E.S. (741-0190)
- Forest Heights Long-Term-Care: Adult Recreation Program (576-3320)
- K-W Habilitation Services: Adult Developmental Services, ARC Industries, Community Placement, Community Initiatives/transitional programs (744-6307)
- Sunbeam Residential Development Centre: Sunbeam Day Program Services (893-6200)

Respite services include in-home and out-of-home supports. They are offered by:

- Aldaview Services (662-3297)
- Community Living Cambridge (623-7490)
- Elmira and District Association for Community Living (669-3205)
- Extend-a-Family Association (741-0190)
- K-W Habilitation Services (744-6307)
- Parents for Community Living (742-5849)
- Sunbeam Residential Development Centre (893-6200)

Planning and Advisory Groups

ASD Working Group of Waterloo Region

- Chaired by: Waterloo Region District School Board Special Education Services (570-0003 X 4536)
Autism Society Ontario Cambridge Chapter (658-4906)

Best Start Network

- Chaired by: Region of Waterloo Social Services Child Care Division (883-2177)
Region of Waterloo Community Health Department Family and Community Resources (883-2002 X 5352)

Child Care Special Needs Resourcing Partnership / SNAP (Special Needs Access Point):

- Community Living Cambridge – Preschool Services (623-7490)
- Developmental Services Access Centre - Preschool Assessment Services (741-1121)
- Elmira and District Association for Community Living – Preschool Services (669-3205)
- Family and Children's Services (576-0540)
- Infant Development (883-2268)
- KidsAbility – SPOT Program (886-8886)
- KidsLINK – Preschool Support Services (741-1122)
- K-W Habilitation Services – Preschool Outreach (884-8080)

Developmental Services Planning and Advisory Council (DSPAC)

- Denise Gruber, chair (623-7490 X 26)

Funding, Training and Employment (FTE) Advisory Committee

- Chaired by: Ministry of Community and Social Services Employment Supports (519-822-7500 X 250)
Human Resources Skills Development /Services Canada (291-3850)

Healthy Babies Healthy Children Advisory Committee

- Region of Waterloo Community Health Department (883-2002 X 5352)

Preschool Autism Advisory Committee

- Erinoak, lead agency (1-877-374-6625)

Preschool Speech and Language Advisory Committee

- Region of Waterloo Community Health Department (883-2002 X 5352)

Waterloo Wellington Mental LHIN Wide Crisis Committee

- Coordinator: (519) 821-8089 x 233

Services To Support People In Waterloo Region With Developmental Disabilities

Please note: Individuals with multiple special needs may need to access other services not listed here. Refer to the resources listed on the back of this sheet.

Children with Special Needs
(access through SNAP - see reverse of sheet)
Community Living Cambridge Preschool Services
Development Services Access Centre Preschool Assessment Services
Early Identification Early Intervention Program
Elmira and District Association for Community Living Preschool Services
Grand River Hospital Preschool Diagnostic and Treatment Services
KidsAbility
KidsLINK
KW Habilitation Services Preschool Outreach

Preschool Services
Best Start Program
Community Action Program for Children
Healthy Babies Healthy Children
Infant Development Program
Ontario Early Years Centres
Public Health Clinics

Community Referrals →

Respite and Day Programs
Community Care Access Centre (CCAC) of Waterloo Region (health care services)
Hatts Off Place (fee for service)
Independent Living Centre of Waterloo Region
Kid's Country Club
KidsLINK Respite Services
Pioneer Youth Services (fee for service)
Safe Haven Shelter (Lutherwood)
Sunbeam Lodge (fee for service)

Adults with Physical Needs
Community Care Access Centre (CCAC)
Independent Living Centre of Waterloo Region
K-W Access-Ability
Ontario March of Dimes

Accessibility and Human Rights
Accessibility Directorate of Ontario
Cambridge Access Awareness Committee
Grand River Accessibility Advisory Committee
Ombudsman Ontario
Ontario Human Rights Commission

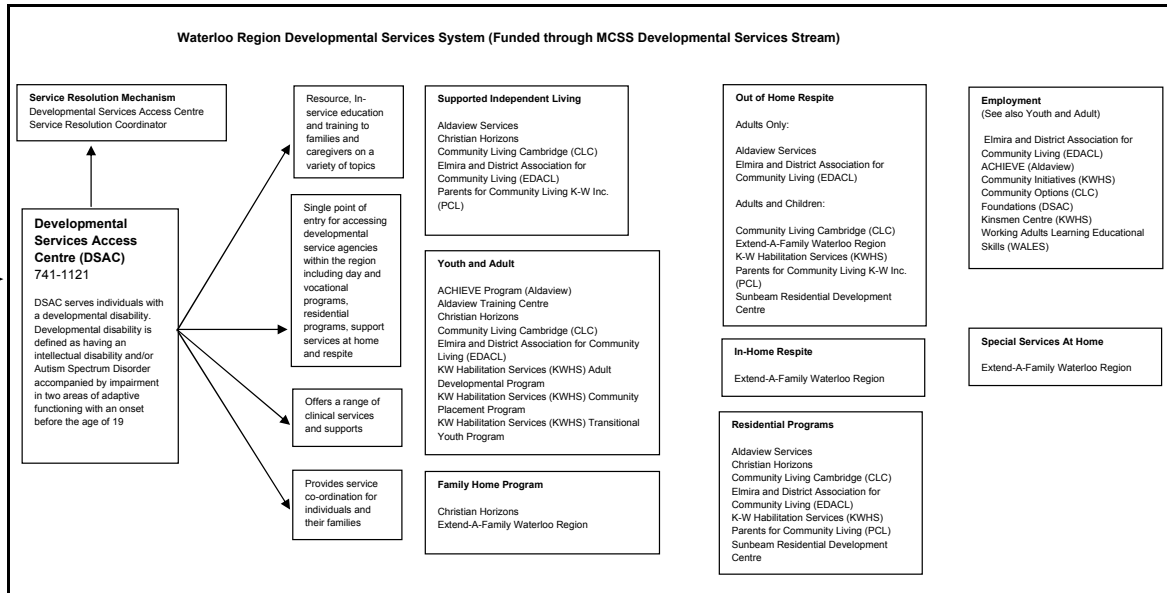
Community Supports for Basic Needs
Community Connections Booklet
Social Planning Council of Kitchener- Waterloo Basic Needs Guide
Waterloo Region Social Services / Ontario Works

Transportation Services
Grand River Transit Mobility PLUS
Golden Triangle Taxi
Kwans Transit
United Taxi
Voyageur

Financial Aid
Assistance for Children with Severe Disabilities (ACSD)
Assistive Devices Program
Ontario Disability Support Program (ODSP)
Region of Waterloo Social Services

Housing Services
Cambridge Home Support
Community Housing Access Centre
Independent Living Centre of Waterloo Region
Lutherwood
Participation House Project Waterloo Region
Waterloo Region Community Housing Access Centre
Waterloo Regional Homes for Mental Health Inc.

Recreational Services
Access 2 Entertainment
City of Cambridge Inclusion Services
City of Kitchener Inclusion Services
City of Waterloo Inclusion Services
PAL Card



Legal Services
ARCH Disability Law Centre
Child Advocacy Project
Waterloo Region Community Legal Services

Health Care
Assistive Devices Program (ADP)
Region of Waterloo Public Health
Community Care Access Centre (CCAC) of Waterloo Region
Community Health Centres
Family Physicians (see phone directory)
Urgent Care Clinics

Acute Care Hospitals
Cambridge Memorial Hospital
Grand River Hospital
St. Mary's General Hospital

Out of Town Services
Chedoke Child and Family Centre
Child and Parent Resource Institute (CPRI)
Erikoak -Preschool Autism Services
-Central West Infant Hearing
Geneva Centre
Technology Access Clinic, Chedoke site

Employment Programs
ACCESS Employment Program
Achieving Competitive Employment (ACE)
Cambridge Career Connections
Human Resources and Skills Development Canada (Service Canada)
Job Track
Lutherwood
QDSP Employment Supports
Sunrise Therapeutic Riding and Learning Centre
Supported Volunteering (Volunteer Action Centre)

Community Mental Health Services
Cambridge Memorial Hospital Psychiatric Services
Children's Mental Health Access Centre
Grand River Hospital
Lutherwood
Waterloo Region Assertive Community Treatment (ACT) Team
Waterloo Regional Branch of the Canadian Mental Health Association (Distress Centre, Crisis Response, etc.)

Emergency Inpatient / Crisis Stabilization Programs
Developmental Behaviour Management Unit, Regional Mental Health Care London
Child and Parent Resource Institute (CPRI)
Grand River Hospital Crisis Outreach Response (COR)
KidsLINK
Lutherwood
Oaklands Regional Centre

Education System Services
Adult Learning Services (St. Louis, Open Door)
Cambridge Literacy Council
Conestoga College of Applied Arts and Technology Disability Services
Project READ Literacy Network Waterloo Wellington
The Literacy Group of Waterloo Region
University of Waterloo Services for Students with Disabilities
Waterloo Catholic District School Board Student Services
Waterloo Region District School Board Special Education Services
Wilfrid Laurier University Accessible Learning Centre

For contact information, refer to the *Resources and Contact Information* listed on the reverse of this page.