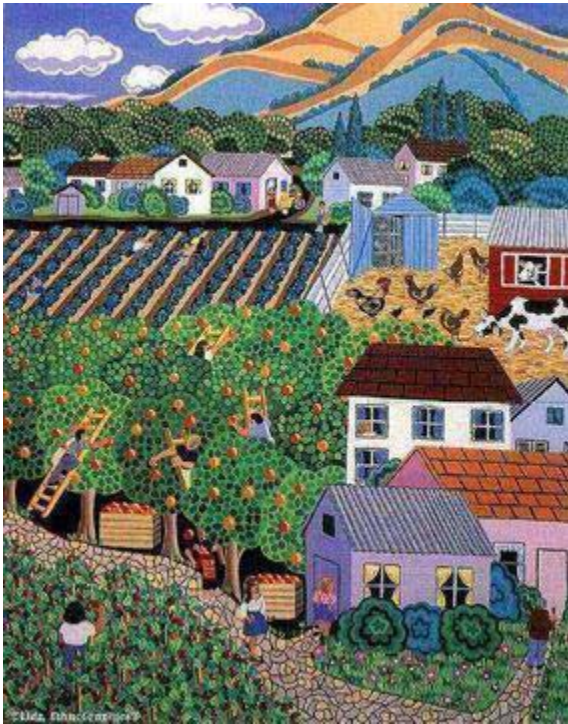


Guelph Services for the Autistic
&
Waterloo-Wellington Autism Services

offer a Facilitated Workshop on

Autism and Community

including discussion of ideas of a farm community and centre
of autism service and expertise.



Monday, November 1, 2004

7:00 – 9:00 pm

*

Ignatius Jesuit Centre/Orchard Park

CMHA Boardroom

On the Northern edge of Guelph

5420 Hwy 6 North, RR5

Guelph, Ontario

*

Facilitated by Bruce Kappel

*

~Open to all interested~

Pre-Registration Required

Please contact Elizabeth Bloomfield at

ebloomfi@uoguelph.ca or

(519) 823-9232 BY OCTOBER 25

You can read more about this idea and meeting at this site:

<http://www.ont-autism.uoguelph.ca/FCC-vision-2004.html>

also

<http://groups.yahoo.com/group/ASDFarmCommunityandCentre/>